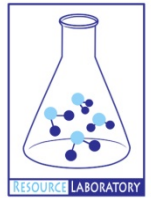




# **GROUNDWATER QUALITY ANALYSIS REPORT**

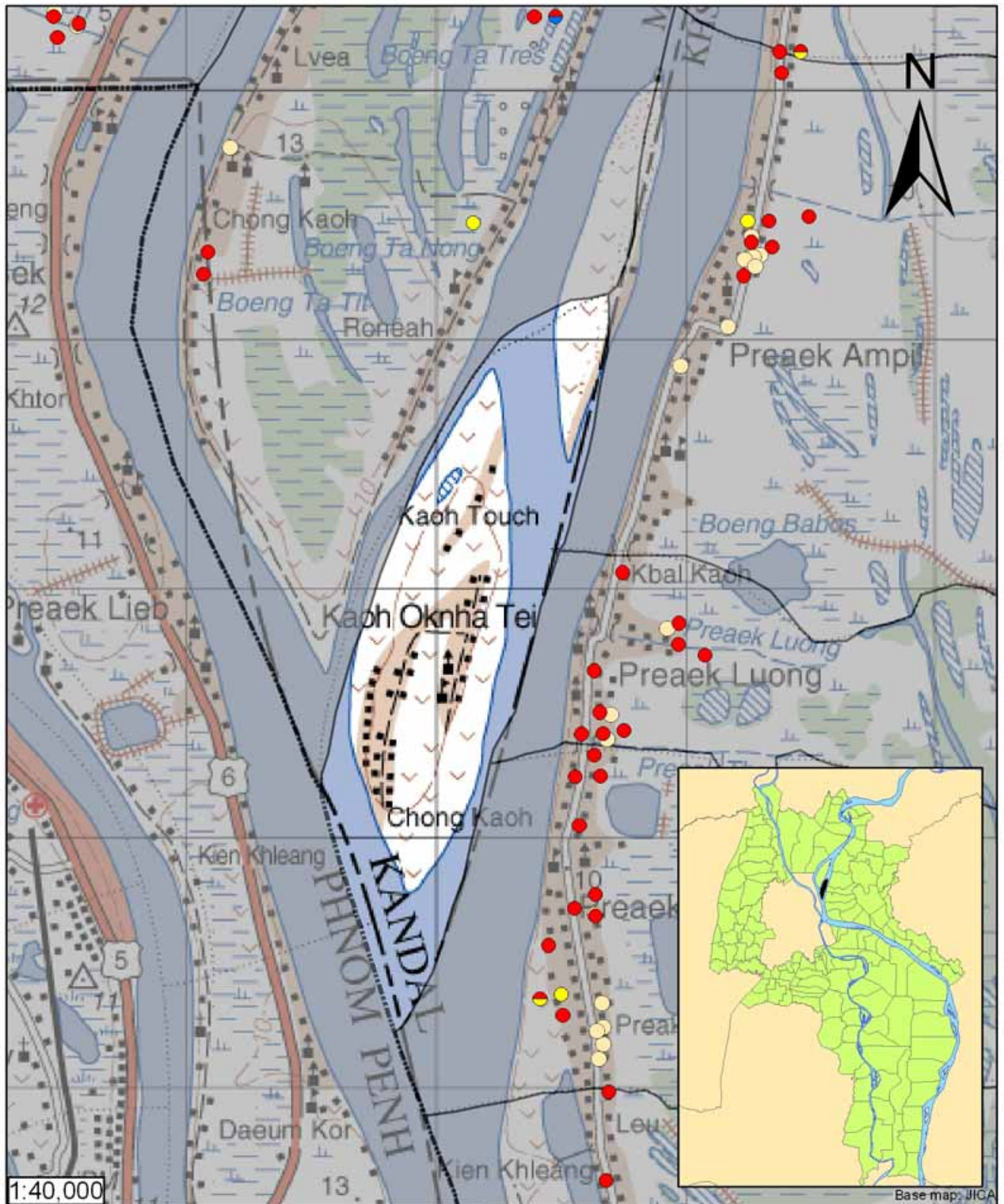
## ***Kandal - Khsach Kandal - Kaoh Oknha Tei (N/A)***



Kaoh Oknha Tei is located in the district of Khsach Kandal. The population of this commune is approximately 4424 (2004). No tube wells were sampled in the commune. The attached figure presents the location of Kaoh Oknha Tei within Kandal as well as groundwater sample locations and exceedances of health-impacting contaminants in surrounding communes.

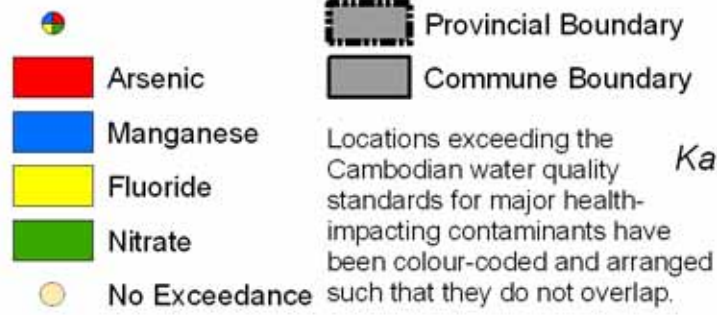
### **Groundwater Quality Rating**

The groundwater quality rating for Kaoh Oknha Tei cannot be reported.



1:40,000

Base map: JICA



## Tube Well Sample Locations and Health-Based Exceedances

*Kaoh Oknha Tei - Khsach Kandal - Kandal - Cambodia*

Resource Development International - Cambodia  
[www.rdic.org](http://www.rdic.org)  
 June 2008

